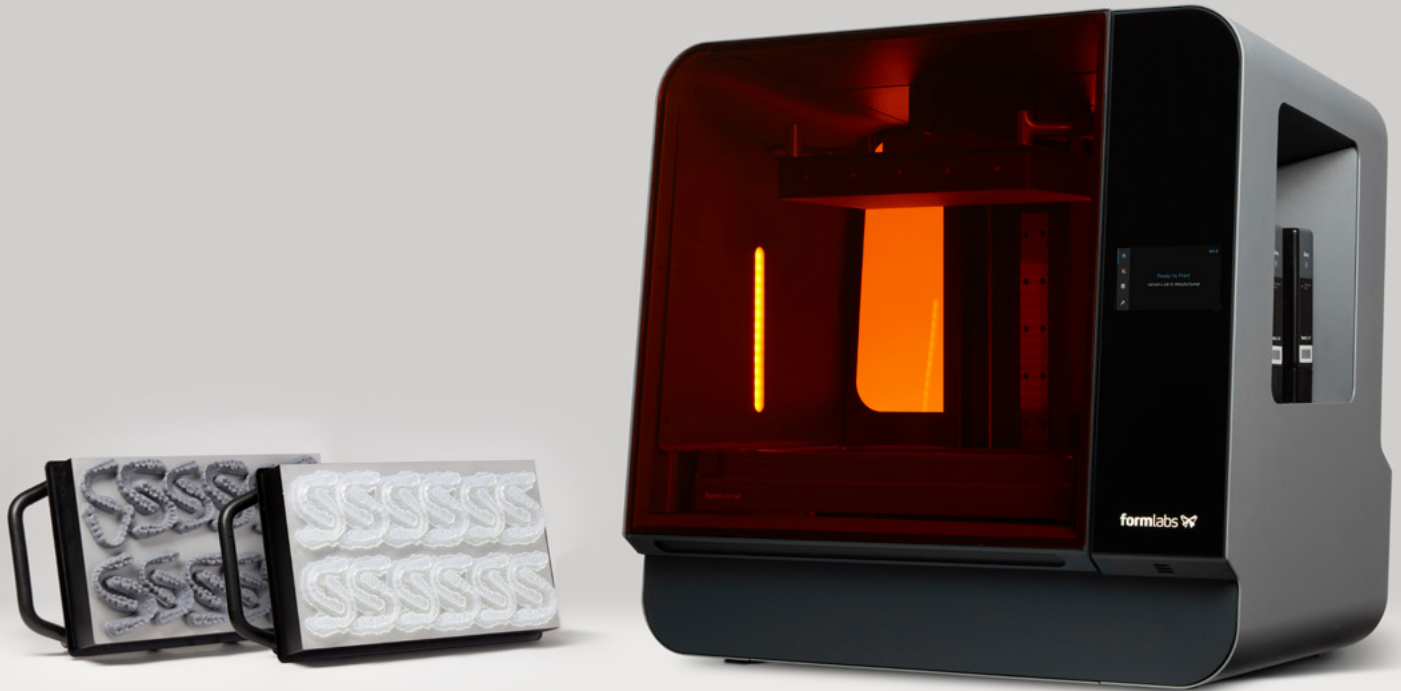


Form 3BL

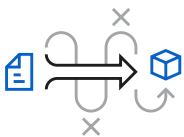
The New Standard for High Volume Dental 3D Printing

formlabs  | dental

Maximum Productivity, Minimum Intervention

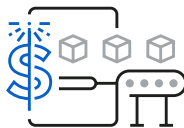


With a large build volume of 33.5 × 20 × 30 cm (13.2 × 7.9 × 11.8 in), the Form 3BL is ideal for dental labs looking for a robust, production-ready printer built on tried and tested Formlabs Dental technology.



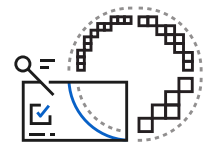
DESIGNED FOR NONSTOP THROUGHPUT.

The Form 3BL is thoughtfully designed to maintain ideal print conditions with minimal operator intervention.



LARGE VOLUME, AT A LOWER COST.

Dental 3D printers with comparable build volumes typically come with a six-figure price tag. The Form 3BL, with everything you need to start printing and a one-year Dental Service Plan, can be yours at an unprecedented value.



PERFECTIONISM THAT SCALES.

Two precision Light Processing Units (LPU) inside the printer achieve consistent accuracy and detail across the two halves of the build platform.

Validated Indications for High Accuracy

Each dental indication for the Form 3BL passes through a thorough validation process by our dental team to meet the accuracy requirements for dental production.

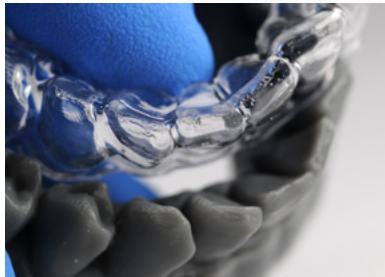
Orthodontic Models

Produce orthodontic models for clear aligners and retainers at scale.

CAPACITY ON THE FORM 3BL

- Up to 24 models per print in ~10 hours.
- 48 models in 24 hours, overnight, with only two interactions. Print up to 50 models per print vertically in one build.

Coming soon: A fast-printing material for orthodontic models.



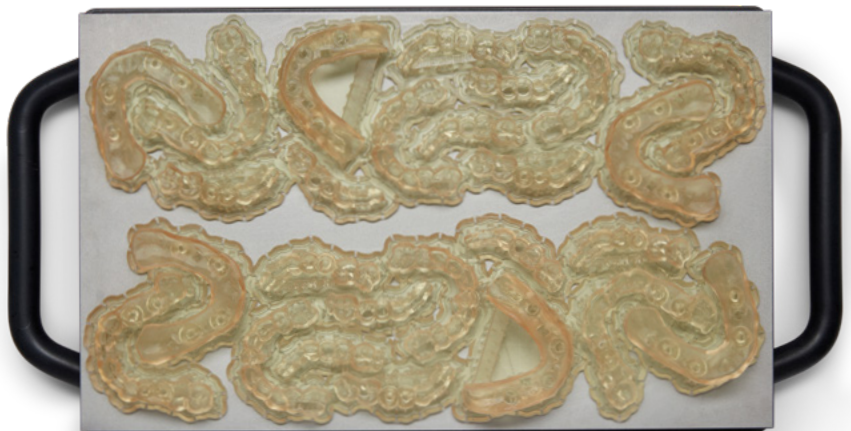
Printed using Grey Resin at 100 micron layer height, the technology behind the Form 3BL produces smooth and refined orthodontic models. The appliances made from these models are of the highest quality.

Surgical Guides

Produce accurate and affordable surgical guides in-house.

CAPACITY ON THE FORM 3BL

- 24 guides (14 full arches and 10 quad surgical guides) per print in ~7.5 hours, overnight, with only one interaction.



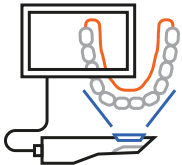
Other indications like splints, occlusal guards, maxillofacial models, custom impression trays, and more are coming soon. To access our full range of indications now, choose the Form 3B desktop 3D printer.

A Robust 3D Printing Ecosystem

The Form 3BL works full time so you don't have to. Free, easy-to-use nesting software and automated post-processing options make custom manufacturing easy.



1.



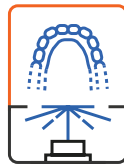
SCAN

2.



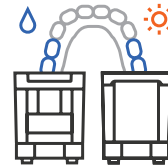
DESIGN

3.



PRINT

4.



POST-PROCESS

5.



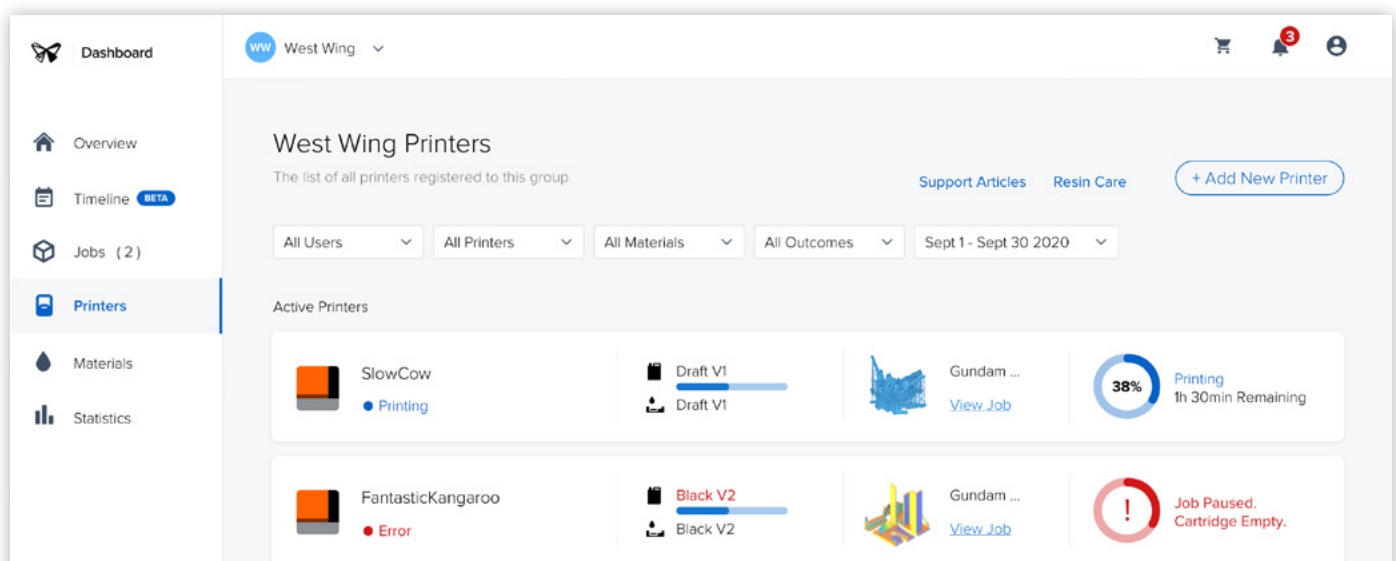
DELIVER

Designed for Nonstop Throughput

The Form 3BL is thoughtfully designed to maintain ideal print conditions with minimal operator intervention.

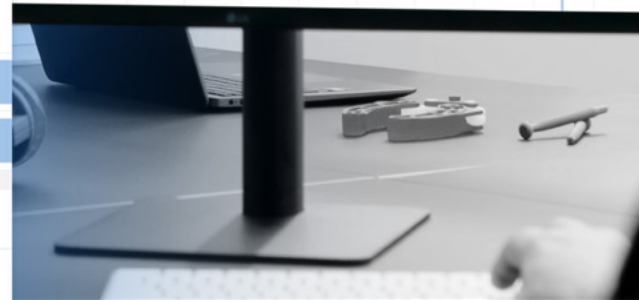
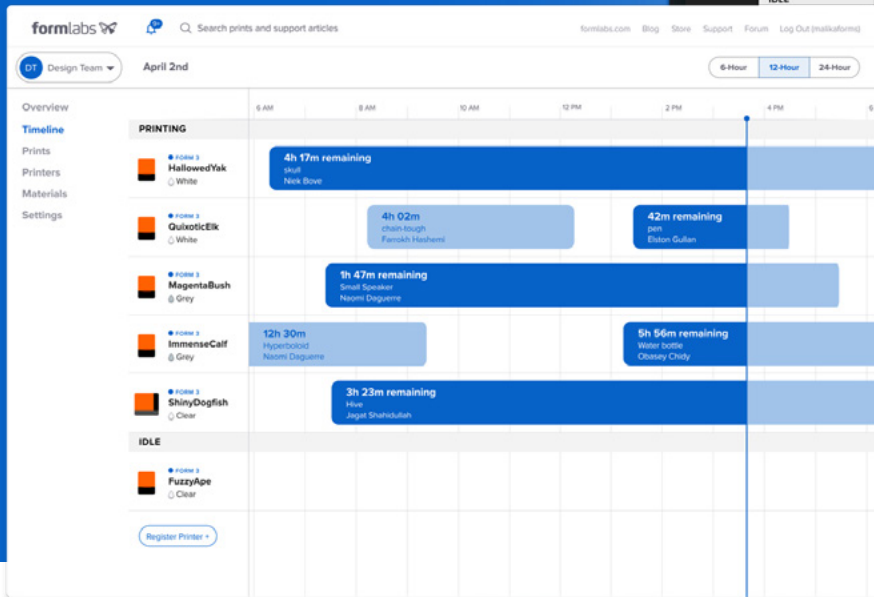
Remotely monitor and inspect your fleet of printers with the online Dashboard.

The Light Processing Units, rollers, and optics window can be replaced in-house, with no external technician required, so you don't have to wait for a replacement printer if something goes wrong.



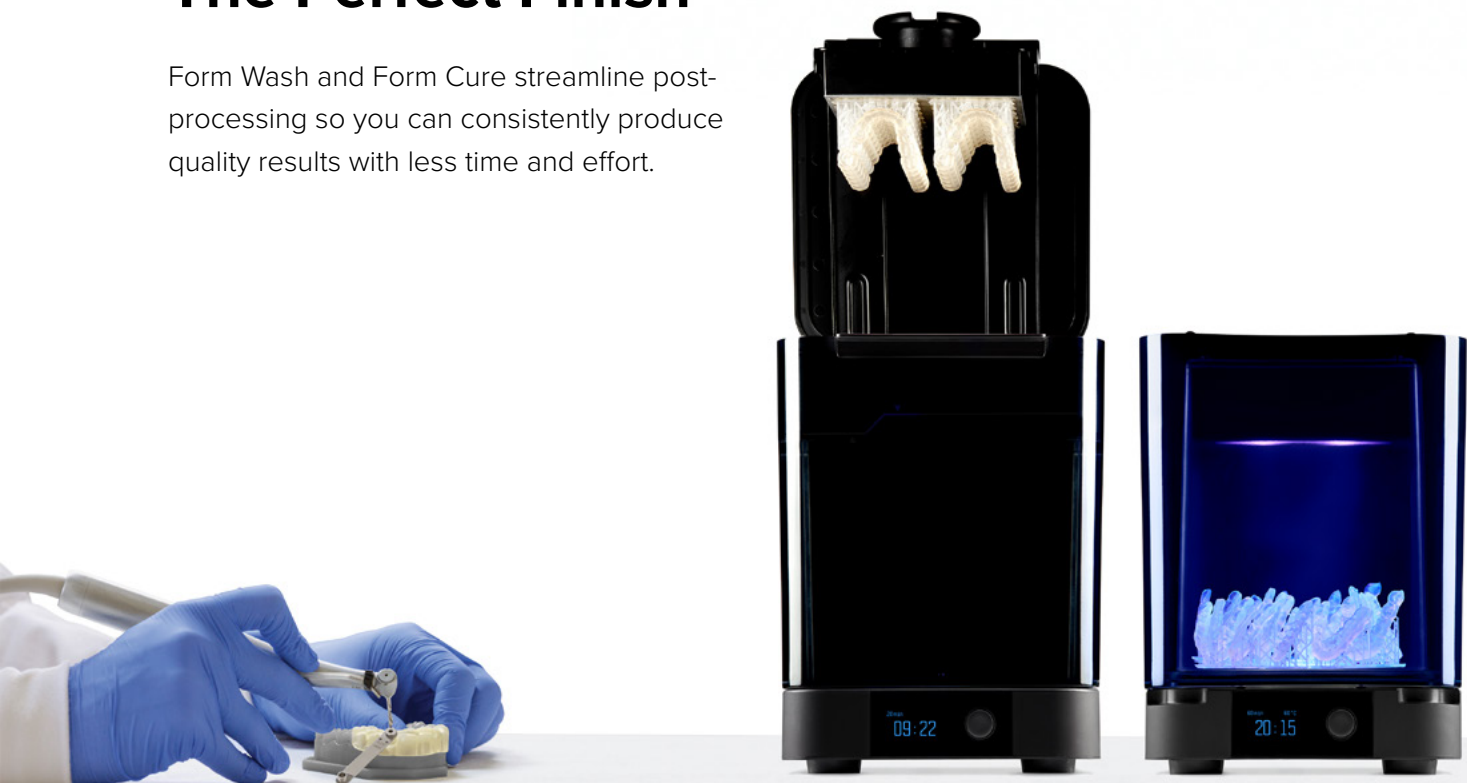
Built for Teams

Plan and manage your print queue in PreForm and manage printers and teams through your online Dashboard.



The Perfect Finish

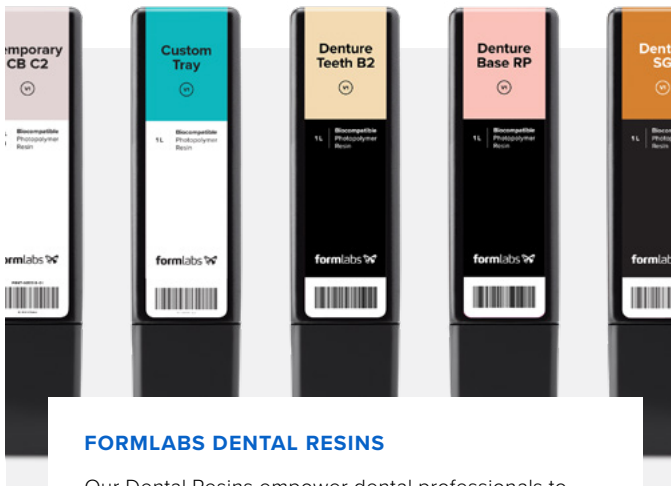
Form Wash and Form Cure streamline post-processing so you can consistently produce quality results with less time and effort.



Part of the Formlabs Dental Ecosystem

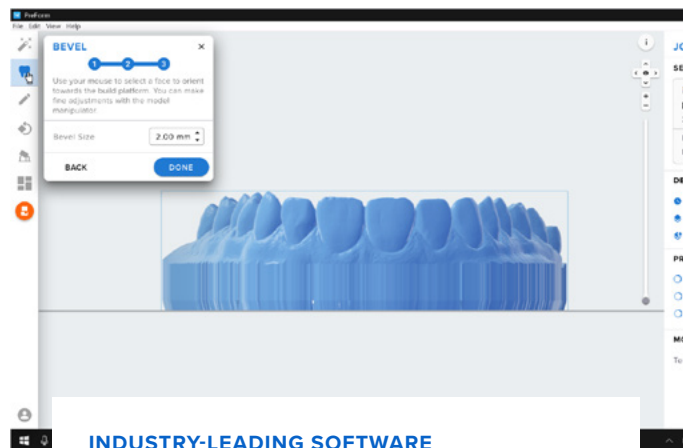


The Form 3BL is designed to integrate with existing dental workflows and Formlabs Dental products as seamlessly as possible, so you can quickly adapt to high volume dental 3D printing.



FORMLABS DENTAL RESINS

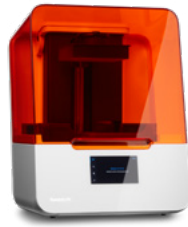
Our Dental Resins empower dental professionals to rapidly manufacture aligner models, surgical guides, and other indications. The Form 3BL uses the same resin cartridges as the Form 2 and Form 3B, but is designed to hold two cartridges at once to account for the larger print volume.



INDUSTRY-LEADING SOFTWARE

Tested over millions of prints, PreForm automatically suggests optimal orientation, supports, and layout to save time during print setup.

Compare Formlabs Dental 3D Printers



Form 3B



Form 3BL

BUILD VOLUME (W x D x H)		
	14.5 × 14.5 × 18.5 cm 5.7 × 5.7 × 7.3 in	33.5 × 20 × 30 cm 13.2 × 7.9 × 11.8 in
XY RESOLUTION	25 microns	25 microns
BIOCOMPATIBLE MATERIALS	✓	✓
LASER POWER	1x 250 mW laser	2x 250 mW laser
WEIGHT	17.5 kg 38.5 lbs	54.4 kg 120 lbs
PRINTER DIMENSIONS (W x D x H)	40.5 × 37.5 × 53 cm 15.9 × 14.8 × 20.9 in	77 × 52 × 74 cm 30.3 × 20.5 × 29.1 in

THE FORM 3B IS IDEAL FOR

- Dental and orthodontic labs and practices
- Manufacturing any of our validated indications
- Multiple quick prints per day
- Printing a single part or smaller batches
- Switching between indications or printing multiple different indications concurrently on multiple printers

THE FORM 3BL IS IDEAL FOR

- Dental and orthodontic labs
- Manufacturing aligner models, occlusal guards, maxillofacial models, surgical guides, splints (soon), custom impression trays (soon)
- Minimum user interactions
- Printing large batches of parts
- Printing the same indication continuously



The Form 3BL Basic Package

Scale up your production with our robust and dependable large-format dental 3D printer, the Form 3BL. The Basic Package includes the essential tools required to start printing high-quality dental parts and biocompatible appliances.

INCLUDES

- 1 Form 3BL 3D Printer
- 1 Resin Tank
- 1 Build Platform
- 1 Finish Kit
(Rinse Bucket and Cleaning Tools)
- Dental Service Plan (DSP)
- PreForm Software

Accessories

Form 3BL Build Platform

Spare build platforms speed up your workflow and allow for nonstop printing, for example, starting a new print while post-processing your previous part. The Form 3BL build platform holds full-size prints and has two side handles to easily transport your printed part.



Form 3BL Resin Tank

Low Force Stereolithography (LFS)[™] 3D printing uses linear illumination and a flexible film tank to turn liquid resin into flawless parts. A key component of the LFS process, the strong dual-layer film at the bottom of the Form 3BL Resin Tank allows for a dynamic and precise print process, scaled up for high volume printing. Each resin tank includes a mixer and is designed to block extraneous UV light and allow for easy stacking.

Formlabs Dental recommends purchasing one tank for each material you are planning to use, understanding that unused resin can be stored in the tank in between use. Tanks wear over time and are considered consumables. Tank lifetime depends on which resin is being used.





Premium 3D Printing Support, Made For Dental

Behind Formlabs Dental is a dedicated team of certified Dental Support Specialists who know exactly how to help when you need it. Premium support is available for one, two, or three years, designed to meet your needs and bring you extra peace of mind.

INCLUDES

Priority Access to Certified Dental Agent

A direct line to a Certified Dental Agent and prioritized email support from our dedicated staff.

Customized Training

A training session over video with a Certified Dental Agent, customized to you.

Hot Swaps for Hardware Replacements

Ensure constant uptime: Formlabs Dental will ship you a replacement printer to keep you printing if your printer needs to be repaired or replaced.

Warranty for the Duration of the Plan

The Dental Service Plan extends the one-year warranty included with your printer to the full duration of the chosen plan.